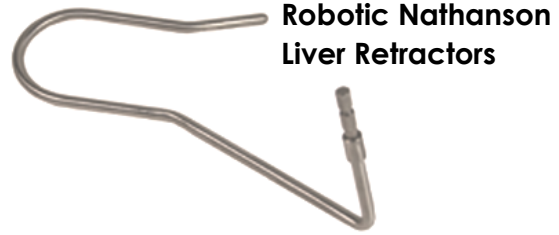


# Mediflex® Liver Retraction Solutions for Robotic-Assisted Minimally Invasive Esophagectomy (RAMIE)

## Lapro-Flex® Articulating Retractors

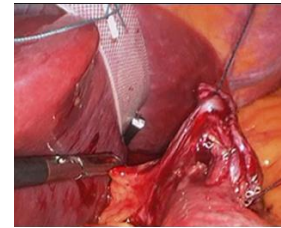


**FlexArm™  
Holding System**



**Robotic Nathanson  
Liver Retractors**

**'Port-Free'  
Versa Lifter Band  
Internal Retractor**



Also available: **Articulating Esophageal Finger-Style Retractor**



- Table-Mounted FlexArm™ Holding System for rigid holding of retraction instruments with ability to easily make intra-operative adjustments as needed
- Low-profile platform to avoid interference with the robotic arm movement
- Various retraction devices available for 5mm port, percutaneous, or completely internal/port-free

For more information, contact Mediflex at: [info@mediflex.com](mailto:info@mediflex.com) or 631.582.6424

**[www.mediflex.com](http://www.mediflex.com)**